

Logistec



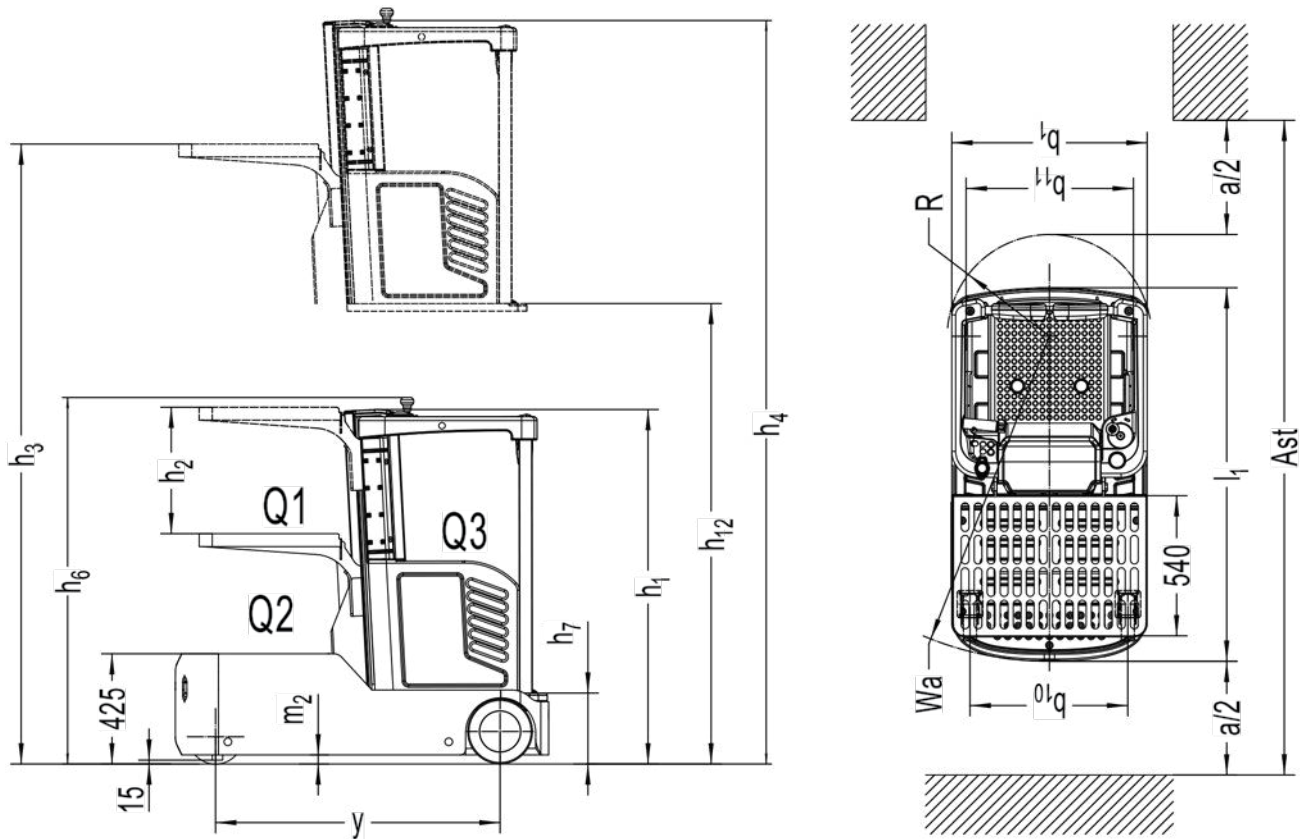
Elevated Work Assist Vehicle
Order Picking Lift Vehicle

Specifications

Max. Platform height: 2990m;
 Truck size: 1365x1440x750mm, turning radius (1260),
 suitable for narrow spaces;
 Light and flexible;
 AGM Battery (maintenance free), Li-Ion as option.

| | | | | | | |
|---------------------|----------------|---|----------------|-------|---------------------------|---------------------------|
| Distinguishing mark | 1.1 | Manufacturer | | | Logistec | Logistec |
| | 1.2 | Model designation | | | JX0(Li-ion) | JX0 |
| | 1.3 | Drive unit | | | Electric | Electric |
| | 1.4 | Operator type | | | Order-picker | Order-picker |
| | 1.5 | Rated capacity | Q | kg | 90/110/136 | 90/110/136 |
| | 1.6 | Load center distance | C | mm | - | - |
| | 1.8 | Load distance centre of drive axle to fork | X | mm | - | - |
| | 1.9 | Wheelbase | Y | mm | 1095 | 1095 |
| | Service Weight | 2.1 | Service weight | | kg | 800 |
| 2.2 | | Axle loading, laden front/rear | | kg | 590/410 | 590/410 |
| 2.3 | | Axle loading, unladen front/rear | | kg | 380/420 | 380/420 |
| Tyres/Chassis | 3.1 | Tyre type | | | Polyurethane/Solid rubber | Polyurethane/Solid rubber |
| | 3.2 | Tyre size, front | | mm | Ø 210×70 | Ø 210×70 |
| | 3.3 | Tyre size, rear | | mm | Ø 250×100 | Ø 250×100 |
| | 3.4 | Additional wheels | | mm | Ø 74×48 | Ø 74×48 |
| | 3.5 | Wheels, number front/rear (x=drive wheels) | | mm | 1x 2/2 | 1x 2/2 |
| | 3.6 | Tread, front | b10 | mm | 545 | 545 |
| | 3.7 | Tread, rear | b11 | mm | 640 | 640 |
| Dimensions | 4.2 | Height, mast lowered | h1 | mm | 1365 | 1365 |
| | 4.3 | Free lift | h2 | mm | 485 | 485 |
| | 4.4 | Lift height | h3 | mm | 3485 | 3485 |
| | 4.5 | Height, mast extended | h4 | mm | 4365 | 4365 |
| | 4.7 | Height of overhead/ guard cabin | h6 | mm | 1410 | 1410 |
| | 4.8 | Seat height/standing height | h7 | mm | 285 | 285 |
| | 4.14 | Stand height, elevated | h12 | mm | 2990 | 2990 |
| | 4.15 | Lowered height | h13 | mm | - | - |
| | 4.19 | Overall length | l1 | mm | 1440 | 1440 |
| | 4.20 | Length to face of forks | l2 | mm | - | - |
| | 4.21 | Overall width | b1/b2 | mm | 750 | 750 |
| | 4.22 | Fork dimensions | s/e/l | mm | - | - |
| | 4.25 | Distance between fork-arms | b5 | mm | - | - |
| | 4.32 | Ground clearance, center of wheelbase | m2 | mm | 35 | 35 |
| Performance data | 4.34.1 | Aisle width for pallets 1000×1200 crossways | Ast | mm | - | - |
| | 4.34.2 | Aisle width for pallets 800×1200 crossways | Ast | mm | - | - |
| | 4.35 | Turning radius | Wa | mm | 1260 | 1260 |
| | 5.1 | Travel speed, laden/unladen | | km/h | 6/6.5 | 6/6.5 |
| | 5.2 | Lifting speed, laden/unladen | | m/s | 0.22/0.27 | 0.22/0.27 |
| | 5.3 | speed, laden/unladen | | m/s | 0.31/0.25 | 0.31/0.25 |
| Electric-engine | 5.8 | Max. gradeability, laden/unladen | | % | 5/8 | 5/8 |
| | 5.10 | Service brake | | | Electromagnetic | Electromagnetic |
| | 6.1 | Drive motor rating S2 60 min | | kw | 0.65 | 0.65 |
| | 6.2 | Lift motor rating at S3 15% | | kw | 2.2 | 2.2 |
| | 6.4 | Battery voltage/nominal capacity | | V/ah | 24V/120 | 24V/120 |
| Additional data | 6.5 | Battery weight | | kg | 50 | 71 |
| | 8.1 | Type of drive unit | | | DC | DC |
| | 10.5 | Steering design | | | Electronic | Electronic |
| | 10.7 | Sound pressure level at the driver's ear | | dB(A) | 60 | 60 |

If there are improvements of technical parameters or configurations, no further notice will be given.
 The diagram shown may contain non-standard configurations.



Options

| No. | Option items | JX0 |
|------|--|----------------------------------|
| 2.1 | Load wheel type | ● Single |
| 2.2 | Model designation | ● PU |
| 2.3 | Load wheel material PU | ● PU |
| 2.7 | Drive wheel material | ● 120 ah |
| 2.8 | Battery capacity | ● 24V- 15A External |
| 2.9 | Charger | ● White Time |
| 3.3 | Battery indicator | ● Yes and not customosed |
| 3.9 | Castor wheels | ● Front blue lamp |
| 3.12 | Blue lamp | ● Lowering ○ Driving ○ Reversing |
| 3.18 | Hummer | ● No ○ Yes and not customised |
| 3.20 | Guide wheel | ● No ○ Yes and not customised |
| 4.7 | Step on the safety switch with both feet | ● No |

Note ● Standard ○ Optional - Inconformity

SITECRAFT

MATERIALS HANDLING EQUIPMENT



1300 363 152
Sales@sitecraft.net.au
www.sitecraft.net.au

Melbourne

17 Macquarie Drive
Thomastown, VIC, 3074

Sydney

2/15 Bonz Place,
Seven Hills, NSW 2147

Canberra

Brisbane

Adelaide